

### Description:

REJUNTAIS is a powder product to be mixed with water resulting in an appropriate grout used for sealing joints in tiles, slabs, glass windows, etc.

### Uses:

Its great variety of colours enables this product to act as an ideal sealer for open and closed joints in glazed tiles, small slabs, glass windows, stone (on walls) as well as flagstones, floor tiles, Gres terrazzo granite paving tiles.

### Surface preparation:

The background must be clean and sound, with no trace of dust particles, grease, oil, etc.

### Application:

- Mix with water in a clean container until obtaining a creamy mix.
- Apply with the aid of a spatula or a grouting gun(Aplijun).
- When placing glass windows, mix with AGLUTAIS 50.

### TechnicalFeatures:

Water absorption:  $30 \pm 0.05\%$   
Powder density:  $1.10 \text{ g/cc} \pm 0.05$   
Mass of density:  $1.950 \text{ g/cc} \pm 0.05$   
Curing density:  $1.900 \text{ g/cc} \pm 0.05$   
Water retention:  $> 97\%$   
Capillarity: Adherence:  $> 3 \text{ kg/cm}^2$   
Compressive resistance:  $> 120 \text{ kg/cm}^2$   
Flexural strength resistance:  $> 60 \text{ kg/cm}^2$   
Colour/s: azul, marrón, negro, blanco and negro, etc.

### Clean up:

Tools must be cleaned with plenty of water.

### Features & benefits:

WATERPROOFING. EXCELLENT ADHERENCE. NO RETRACTION. HIGH COLOUR STABILITY.GOOD MECHANICAL RESISTANCE.

### Coverage:

F:  $0,65 \text{ kg/m}^2$ , e= 5 mm; G:  $1.3 \text{ kg/m}^2$ , e=10 mm.

### Storage:

It is recommended to store this product for 3 years in its tightly closed original packages sheltered from bleakness.

The information provided on this technical data sheet and particularly the recommendations for the application and use of the product is based on our current knowledge and are provided in good faith, considering that the products are used, handled and stored under normal conditions and within the limits of it's useful life. The possible differences between the materials, supports, and real conditions in the application site can be so important that it is no possible to establish a warranty with this document or any other information provided. The user must verify with a suitability test that the product conforms to the required use. Users should refer to the information included in the last technical data sheet edition.



#### PROFESSIONAL CONSTRUCTIVE SOLUTIONS

©TEAIS S.A. - All rights reserved - Avda. da Enerxía, nº 153, Pol. Ind. de Sabón - 15143 Arteixo, A Coruña  
Telf.: 981 600 966 - Fax: 981 601 508 - Email: info@teais.es



DIRECTION GÉNÉRALE  
Jonquet Face MTN Internet  
Tél.: (+229) 21 33 33 48  
95 96 00 08

04 B P : 0526 Cotonou  
contact@hbpbenin.com  
www.hbpbenin.com

DIRECTION COMMERCIALE  
HBP New City  
Mars Militaire à côté de Yoni lobo  
Tél.: (+229) 21 32 48 48  
95 02 72 72 - 94 00 61 61

### Packaging:

Available in packs of:

**TIPO FINO: Azul, Marrón, Negro, Ocre, Rojo and Verde:** 1 Kg

5 Kg

25 Kg

**TIPO FINO: Blanco and Gris:** 1 Kg

5 Kg

25 Kg

**TIPO GRUESO: Blanco and Gris:** 1 Kg

5 Kg

25 Kg

**TIPO GRUESO: Azul, Marrón, Negro, Ocre, Rojo, Verde:** 1 Kg

25 Kg

5 Kg

**TIPO FINO Intermedio: Azul, Marrón, Negro, Ocre, Rojo, Verde:** 25 Kg

5 Kg

1 Kg

**TIPO GRUESO Intermedio: Azul, Marrón, Negro, Ocre, Rojo, Verde:** 25 Kg

1 Kg

5 Kg

### Health and safety advice :

R36/37/38 -- Irritating to eyes, respiratory system and skin

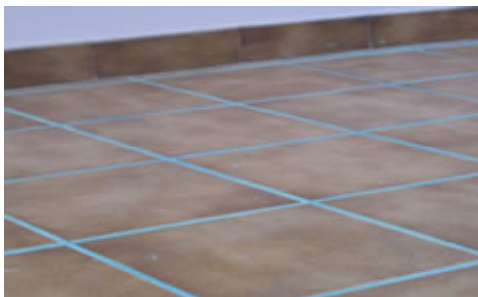
S2 -- Keep out of the reach of children

S8 -- Keep container dry

S24/25 -- Avoid any inhalation, contact with skin and eyes. Wear suitable protective clothing and gloves

S26 -- In case of contact with eyes, rinse immediately with plenty of water and seek medical advice

S37/39 -- Wear suitable gloves and eye/face protection



The information provided on this technical data sheet and particularly the recommendations for the application and use of the product is based on our current knowledge and are provided in good faith, considering that the products are used, handled and stored under normal conditions and within the limits of its useful life. The possible differences between the materials, supports, and real conditions in the application site can be so important that it is no possible to establish a warranty with this document or any other information provided. The user must verify with a suitability test that the product conforms to the required use. Users should refer to the information included in the last technical data sheet edition.